



# Lewannick, Polyphant & Trevadlock NEWSLETTER

ISSUE 445

NOVEMBER 2023

## PARISH COUNCIL

### County Councillor Report.

At the full Council meeting Members were informed that the 2024 World Heritage Site UK Conference was to be hosted in Heartlands, which would showcase Cornwall's mining heritage and the Cornwall and West Devon World Heritage Site.

Following Rishi Sunak's announcement that he plans to scrap many of the proposals to bring in 20mph highway schemes, it looks like at this moment in time Cornwall Council will continue with their planned roll out where communities would like to see this delivered. Cllr Parsons full report is available on his official facebook page. **Planning.** There were four applications discussed at the meeting, PA/23/07443, Lidsey, 1 Bowlers Green. Works to a Sycamore covered by a TPO. Supported. PA23/05154, Pen Inney house Extension and conversion. This was supported. PA23/07444, Land south of Harpers Meadow outline planning permission for a new dwelling. Not supported. PA23/07928, Rose Cottage Polyphant. Erection of a greenhouse. Supported. All planning applications are available to view and make comments on the Council website; [www.cornwall.gov.uk/planning](http://www.cornwall.gov.uk/planning).

### Dog Bins.

The dog bin situated at Trelaske Cross is not being emptied and is overflowing, the Clerk will contact BIFFA and arrange for this to be emptied on a regular basis and a contract will be drawn up.

### Telephone Kiosk, Polyphant.

It has been reported that bags of books are being left in bags, this looks untidy and not welcoming to users of the Library, the Clerk will make contact with the person overseeing this project.

### Notice Boards.

The Clerk will pursue quotes for two new wooden notice boards but also get quotes for metal ones for comparison.

### Digital Newsletter.

There has been very little feedback, so it was agreed to let this be for the time being.

### Highways and footpaths.

A30/B3257 Junction at Bodmin Moor Services. There is no update and another meeting with National Highways is needed. There has been another accident reported at the meeting (another one happened after the meeting). The Clerk will contact National Highways with a further letter asking for action to be taken.

IN AID OF FRIENDS OF LEWANNICK SCHOOL

JOIN US FOR

# WINE & WISDOM

SAT 11TH NOVEMBER AT 7.30PM  
LEWANNICK VILLAGE HALL

Teams of up to 6 people.  
£30 per team.  
Includes two bottles of wine and nibbles

To book a table contact the PTA at [pta@lewannick.net](mailto:pta@lewannick.net)

JOIN US FOR A

# CHRISTMAS FAYRE

SATURDAY 18TH NOVEMBER  
10AM-3PM  
LEWANNICK VILLAGE HALL  
TEA, COFFEE AND FESTIVE TREATS  
WILL BE AVAILABLE ON THE DAY



Have a clear out and help support Lewannick School! The Lewannick PTFA receive funds on a weight basis for your bagged up unwanted items. Bags2school collection is on **Thursday November 9<sup>th</sup> at 9am** Please leave your sacks of stuff in reception or under the canopy at Lewannick School before this date. If you have bags to donate but are unable to drop them into School, call **07866693953** and we will get someone to help. Your support is greatly appreciated.

## Vix Open House at The Sycamore's



### Lewannick

### Everyone welcome

December 1<sup>st</sup> 10am to 6pm

Raising funds for LADS Panto charities!

Local craft stall's, Body Shop, Jo's Cheesecakes, Handmade Christmas Wreaths and arrangements available or to order.

Tea Coffee, festive nibbles or a cheeky mulled wine

**Hope to see you there.**



The remembrance service will be held on **Sunday 12th November at 3 o'clock** by the war memorial Lewannick.

### MacMillan Coffee Morning

Vera's coffee morning raised **£322.50**. many thanks to all who gave so generously and to Vera for hosting such an enjoyable event. 🙌😊

### Lewannick Play Park Committee



There will be a meeting in Lewannick Village Hall at 8pm on Tuesday 7<sup>th</sup> November. All welcome.

## Rainfall by John Panter

September 2023 4.20" 105mm  
September 2022 5.56" 139mm



Please let us know of any dietary requirements so we can accommodate.

Call Gemma or Rob 782700

## Lewannick Post Office & Stores

Groceries, Off-licence, Cakes & Pasties, Fruit & Vegetables, Fresh Bread, Newspapers & Magazines, Coal & Logs, Greeting Cards, Bottled Gas (all sizes) available at cheap prices!

### Opening Hours Shop

Mon - Fri: 7.00am - 6.00pm

Sat: 7.00am - 2.00pm

Sun: Closed

### Post Office

Mon - Fri: 9.00am - 5.30pm

Sat 9.00am - 12.30pm

Please note we have returned to accepting all payment methods over the counter again.

01566 782 269



### Polyphant's Charitable Village Store

Mon - Fri: 07:00am - 4:00pm

Sat: 07:00am - 12:00pm

Groceries, Confectionary, Fresh Bread & Cakes, Chutneys & preserves, Greeting cards & gifts, Off Licence, Hot pasties & sausage rolls Freshly served Tea & Coffee.

Newspapers available to order

01566 86029

### Polyphant Coffee Mornings

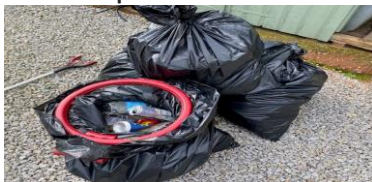
Our next Coffee Morning will be on Wednesday 8<sup>th</sup> November at 10.00 am in Polyphant Methodist Church & Community Centre. Just £2.00 for Coffee and Cake. Come and chat with your neighbours, everyone welcome. For further information, please ring Irene on 01566 451522

### Polyphant Knit & Natter Group

Our November meetings will be on Mondays the 6<sup>th</sup>, 13<sup>th</sup>, 20<sup>th</sup> and 27<sup>th</sup> November at 2.00 pm in Polyphant Methodist Church & Community Centre. Just £2.00 per meeting to include refreshments. Everyone welcome. For further information please ring Julie on 07741 469006.

### LITTER ACCUMULATION IN THE PARISH

Just a reminder to pick up your litter especially after recycling collections. As the attached photo shows last week was particularly bad with 4 big bags in one week from the village and roads to the A30. This is only mine and I am sure others have picked as well! Vern



## LEWANNICK CHURCH NEWS

### November - Church Services

Wed 1<sup>st</sup> 6pm All Saints service

Lewannick Church

Fri 3<sup>rd</sup> 2.30pm Thanksgiving service for Elizabeth Hickish

Sun 5<sup>th</sup> 9.30am Holy Communion

Sat 11<sup>th</sup> 10.45am Remembrance Day

Sun 12<sup>th</sup> 9.30am Morning Worship

Sun 19<sup>th</sup> 9.30am Holy Communion

Sun 26<sup>th</sup> 10am Cafe Church Informal

### Elizabeth Hickish

There is a service of Thanksgiving for Elizabeth on Friday 3<sup>rd</sup> November at 2.30pm in Lewannick church. The family offer a warm invitation to all those who would like to come.

Cafe Central is open every Tuesday and Thursday — 2pm to 4pm

The Vine Group meets the second Wednesday in the month (8<sup>th</sup>), 3 Lewannick Close at 7pm.

### Clergy Contact

Revd Sean Clancy ---07792780596

Revd John Haley — 01822 833634

### Polyphant Ladies Club

On Wednesday, 29<sup>th</sup> November we have a coach trip planned to Exeter for Christmas shopping and sightseeing. Departing Polyphant Chapel at 9.30am and leaving Exeter at 3.30pm. If you would like to book a guest seat on this trip, please contact Ann Hobden 07767 307200 or email [ann.hobden@gmail.com](mailto:ann.hobden@gmail.com). The return coach fare is £15.00"

## POLYPHANT METHODIST CHURCH & COMMUNITY CENTRE

We look forward to welcoming everyone when we meet for worship on the following Sundays in November. These Services will start at 10.30 am.

5<sup>th</sup> November Revd Doreen Sparey-Delacassa

12<sup>th</sup> November Peter Bloye

19<sup>th</sup> November Angela Morrison

26<sup>th</sup> November Henry Stanbury

Did you know the Church can be booked for private events at £10 per hour? Two rooms are available with a fitted kitchen and toilet facilities.

There is also a large private car park with easy access behind the church.

*Polyphant Chapel is a collection point for Launceston Food Bank if you wish to donate food at any time, all contributions are most welcome.*

Revd. Doreen Sparey-Delacassa.

01566 880400

Steward Pam Harris 01566 86525

Secretary: Ann Hobden 07767 307200

Bookings: Ann Bishop 01566 880019

## PARISH COUNCIL CONT

### Grit Bins.

It was reported that the Grit bins in Polyphant need filling, their locations will be forwarded with a request for the first free winter refill. Play areas and open spaces. Lewannick play park net swing will soon be back in service as soon as the new Knuckle hinges arrive from Schoolscape. Polyphant play area, the fencing is in a state of poor repair and quotes are being sought for its replacement together with a new gate. People are still parking illegally on Polyphant Green, a "No Parking" sign needs to be put up incorporating the local By-Laws.

## The Polyphant Bazaar is Back!

**BAZAAR**

Saturday, November 4<sup>th</sup> from 11am - 2pm

Come and join us for our early Christmas Bazaar. We will have tables of home-made baking, jams chutneys, local crafts, plants, woodturning, pre-loved furniture, vintage clothes etc. Polyphant Chapel has a large car park. Refreshments will be available. If you would like to book a table please contact Ann, Shirley or Caroline from Polyphant Ladies Club. See contact details below.

Ann Hobden 07767307200

## Ian Palmer and Grandson



### The Good Companions

2024 holiday to Eastbourne,

Wednesday 17<sup>th</sup> July to Sunday 21<sup>st</sup> July

Staying at the Queens hotel, a Victorian seafront hotel overlooking the pier With day trips to Chartwell house, home to Winston Churchill, please let me know when you book if you are a National trust member.

Tunbridge wells, Hastings and Rye.

Double or twin room £406 per person

Plus sea view £450 per person

Single room £458 per person

All welcome to join our friendly group.

We strongly recommend that you take out travel insurance. To book please ring Dottie on new number 01566 451267 thanks, Dottie.

### Sharon Francome Hairdressing

Please call 07769 155596